



## Focus on Success. Focus on Your Business

### About AbleWatch

AbleWatch RMS delivers real-time information about network and device health through a secure Web-based interface or Dashboard. Administrators or IT professionals are able to access system information to monitor, manage and troubleshoot assets (workstations, servers, applications, firewalls, routers) and networks.



### AbleWatch Can Help You:

- ❖ Address technical issues before they happen
- ❖ Gather information about system performance
- ❖ Set up alerts to manage unexpected events or failures
- ❖ Make informed decisions about IT strategy

### Focus helps your business succeed and grow.

You need to focus on your core business, confident your processes run smoothly, transparently. A well-managed Information Technology system facilitates business processes, productivity, security, and connections to customers, suppliers, partners and industry information.

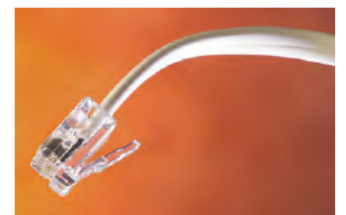
### AbleWatch Remote Managed Services (RMS) helps you

monitor, maintain and support your desktops, networks and servers, so you have the healthy IT system you need.



**We focus on your IT, freeing you to focus on your business.**

**AbleWatch** can be implemented in part or as a Fully-Managed solution – an option for businesses requiring full IT-department services. With AbleWatch Fully-Managed, our professionals respond and repair critical failures immediately.



[www.ablewatch.com](http://www.ablewatch.com)

# AbleWatch Services

*\*Many services are optional*

## Monitoring

- ✦ Network availability and performance
- ✦ Email performance
- ✦ Desktop computers
- ✦ Security and firewall
- ✦ Virus and attack
- ✦ Backup solutions
- ✦ Predictive failure

## Maintenance

- ✦ Network and server
- ✦ Desktop
- ✦ Virus prevention
- ✦ Warranty labour
- ✦ Automated patch management

## Infrastructure Management

- ✦ Network mapping and documentation
- ✦ Software licence management
- ✦ Asset tracking and management
- ✦ Quarterly reporting

## Support

- ✦ Unlimited end-user support
- ✦ Unlimited network support
- ✦ 24x7 systems monitoring
- ✦ Trouble ticket implementation and resolution
- ✦ Phone, email and Web portal support

## Consulting

- ✦ Design, build, and manage information technology



## To inquire about AbleWatch or AbleWatch Fully-Managed

Email: [info@ableone.com](mailto:info@ableone.com)  
Phone: 519. 570.9100 x251  
Toll Free: 1.800.461.2253

[www.ablewatch.com](http://www.ablewatch.com)

# AbleWatch Benefits

- ✦ **Stabilize IT spending.** Fixed monthly expenses and proactive management stabilizes IT budget allocation.
- ✦ **Save money.\*** Costs are reduced with regular maintenance, proactive planning, asset and software management and reduced IT-HR costs.
- ✦ **Simplify administration.** Easy access to information and IT support let's you spend more time and energy improving your bottom line.
- ✦ **Save time.** Your IT systems function more efficiently, freeing staff to spend more time on productivity, less time dealing with IT problems. This allows staff to focus on their day-to-day activities and meet company deadlines.
- ✦ **Increase productivity.** You and your staff can focus on tasks, knowing that IT problems will be quickly resolved by AbleWatch.
- ✦ **Improve staff morale.** Remove IT related problems from your staff and send the message "your skills are most important."

*\*AbleWatch Fully-Managed can reduce IT costs 20-30%. (Based on research by Gartner.)*



## Getting Started

**AbleWatch** works with you to understand what's important to your facility and develops a customized solution for RMS-implementation, management and monitoring of your IT. We support you, allowing you to focus on your business.

**AbleWatch** is a service offered by Able-One Systems Inc., an IBM Premier Business Partner and Microsoft Gold Certified Partner. Our team of technical professionals work with you to provide the most current and the most effective hardware, networking, application and IT planning solutions.



**Lotus.**

**Microsoft**  
GOLD CERTIFIED  
Partner